

Flowics. Brand Resources



CTRL MAGIC

LOGO

Main Logo

Our logo is the combination of a simple and modern wordmark, an icon and our tagline. It is the core of our identity and the signature for all our communications.

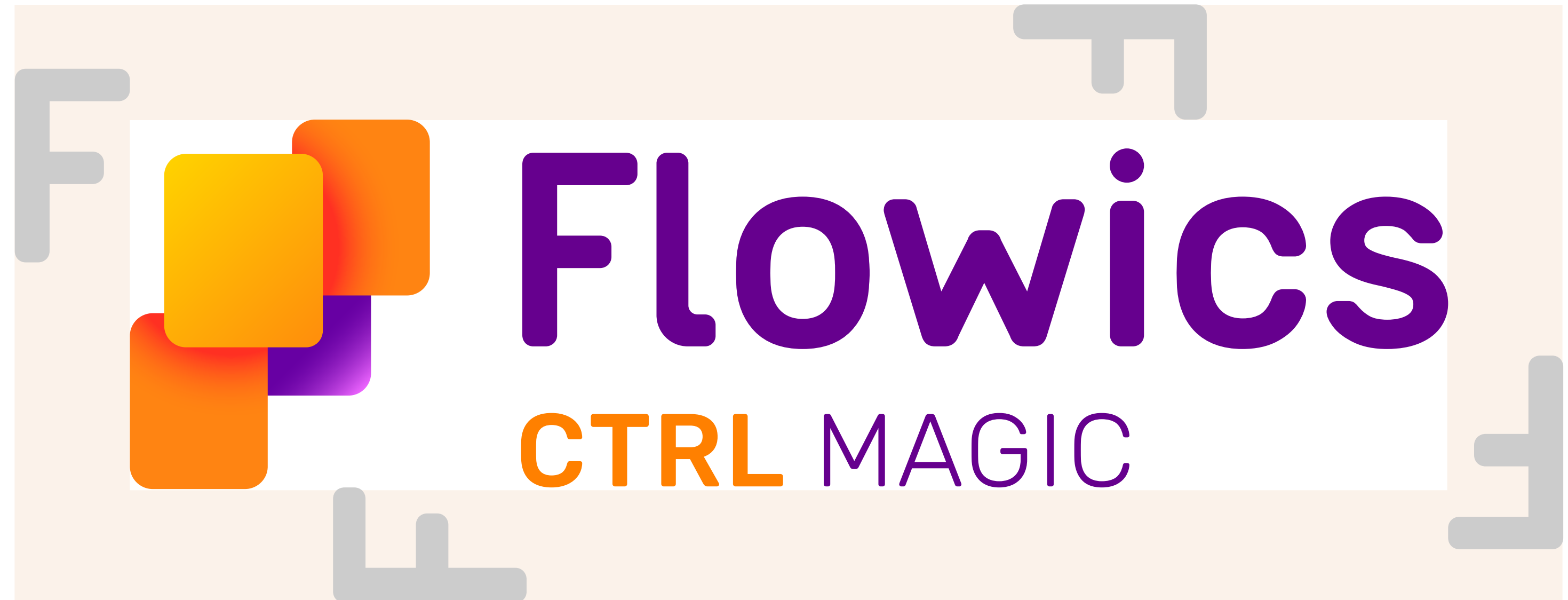
If is absolutely necessary, an alternative version (witout tagline) can be used.



LOGO

Exclusion Zone

The logo exclusion zone is equal to the width of the F present on our wordmark



LOGO

Vertical & Responsive versions

Our Logo has different versions that can be used by the designer.

On applications where the space is limited and it is not possible to use the full version we can rely on these minimal reduced versions.



LOGO

Dark backgrounds

On dark backgrounds, we recommend using this version by applying #FFE7E6 for -Flowics- and -MAGIC-.



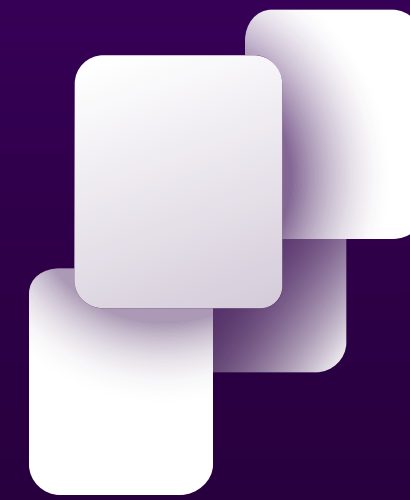
LOGO

Dark backgrounds

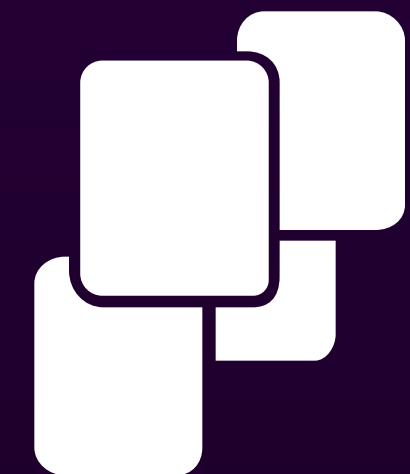
On dark backgrounds, we recommend using these versions



Flowics
CTRL MAGIC



Flowics
CTRL MAGIC



Flowics
CTRL MAGIC

LOGO

Icon

The F symbol is the star of our brand. It is made up of 4 modules and summarize the heart of our brand idea: **Magic!** (playing cards).

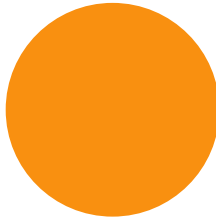
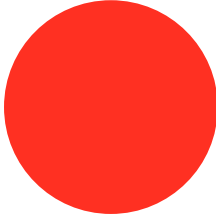
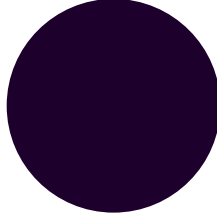


	Solid	Gradient	Image
Color			
Monotone w/gradient			
Monotone			

COLORS

Our colors define us and are a fundamental tool for our identity. The more we adhere to the consistent and balanced use of color, the better we can adapt and strengthen our bond with our brand essence.

Main colors

	Surprise Yelow #FFCF00 255 207 0 0 19 100 0 P 116 C		Magic Orange #F99010 255 128 0 0 50 100 0 P 151 C		Fire Red #FF3022 255 48 34 0 81 87 0 P Bright Red C		Pale Pink #FFE5E4 255 229 228 0 10 11 0 P 705 C		Hidden Rabbit #FCF5F5 252 245 245 0 3 3 1 -
	Mystic Lilac #D880FF 216 128 255 15 50 0 0 P 2572 C		Supernova #B448FF 180 72 255 29 72 0 0 P 2582 C		Fantasy Violet #9500FF 149 0 255 42 100 0 0 P 2592 C		Velvet #66008C 102 0 140 27 100 0 45 P 2597 C		Dark Night #1E002C 30 0 44 32 100 0 83 P 5255 C

Secondary colors

	Power Aqua #00E1E3 0 225 227 100 10 11 P 311 C		Secret Turquoise #66B0C1 102 176 193 47 0 9 24 P 4157 C		Blue Wizard #00609D 0 96 157 100 39 0 38 P 3015 C		Deep Mistery #222639		Casper White #FFF0F5
--	---	--	--	--	--	--	--------------------------------	--	--------------------------------

Gradients

